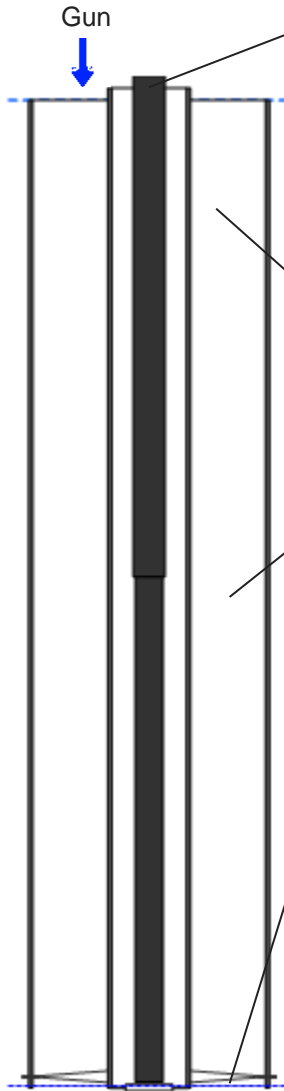
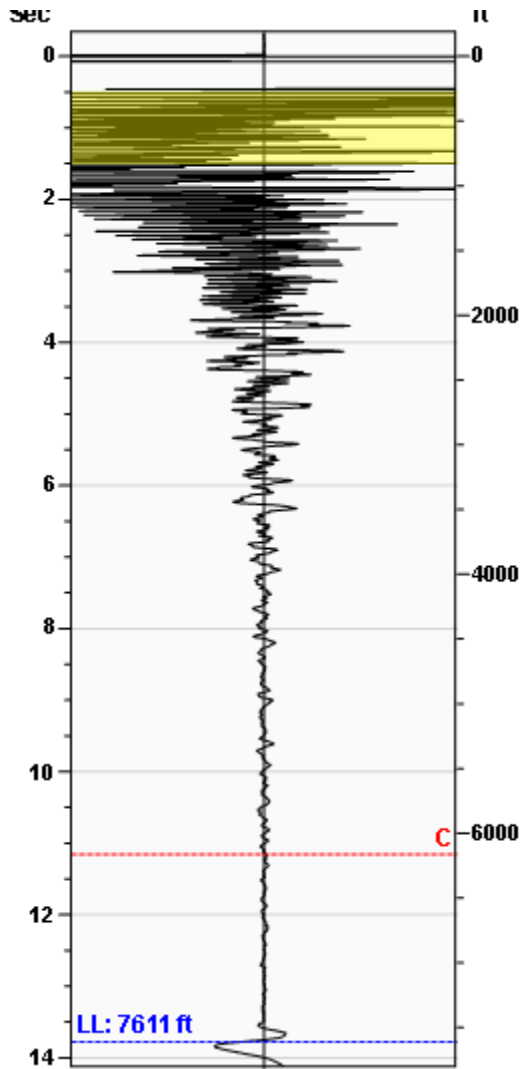


**Liquid Level**

**7611 ft**

Fluid Above Pump  
Gas Free Above Pump

16 ft  
16 ft



**Production**

|                      |          |           |        |
|----------------------|----------|-----------|--------|
| Date Entered         | 10/01/09 |           |        |
|                      | Current  | Potential |        |
| Oil                  | 4        | **        | BBL/D  |
| Water                | 21       | **        | BBL/D  |
| Gas                  | 2.0      | **        | Mscf/D |
| IPR Method           | Vogel    |           |        |
| Producing Efficiency | **       |           |        |

**Casing Pressure**

|          |              |
|----------|--------------|
| Pressure | 49.0 psi (g) |
|----------|--------------|

**Annular Gas Flow**

|          |            |
|----------|------------|
| Gas Flow | 1.0 Mscf/D |
|----------|------------|

**Fluid Properties**

|                     |         |
|---------------------|---------|
| % Liquid Above Pump | 100.00% |
| % Liquid Below Pump | **      |

**Wellbore Pressures**

|                   |                        |
|-------------------|------------------------|
| PIP               | 70.8 psi (g) @ 7627 ft |
| PBHP              | 65.0 psi (g) @ 7570 ft |
| SBHP              | **                     |
| Gas/Liq Interface | 79.8 psi (g) @ 7611 ft |

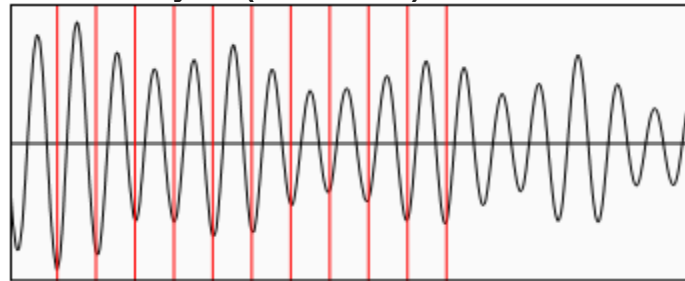
**Depths**

|                   |         |
|-------------------|---------|
| Pump Intake Depth | 7627 ft |
| Formation Depth   | 7570 ft |

**Sensor Serial No.**

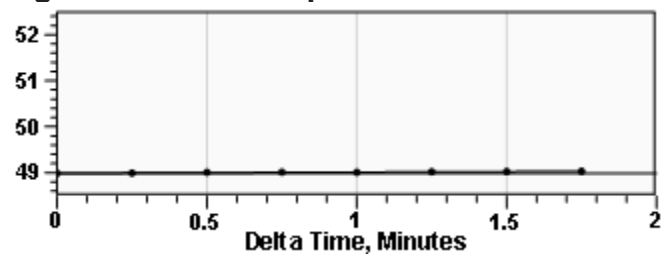
WG 3006

**Collar Analysis (Automatic)**



|                           |               |
|---------------------------|---------------|
| Average Acoustic Velocity | 1105 ft/s     |
| Average Joints Per Sec.   | 17.64 Jts/sec |
| Joints To Liquid          | 243.02 Jts    |

**Casing Pressure Buildup**



|                 |                |
|-----------------|----------------|
| Casing Pressure | 49.0 psi (g)   |
| Buildup         | 0.0 psi (g)    |
| Buildup Time    | 1 min 45 sec   |
| Gas Gravity     | 0.8829 Air = 1 |

**Comments and Recommendations**

35% Run Time. The up-kick before the Liquid Level line is the perforations (up-kick indicates an opening of the cross-sectional area)

Downhole Diagnostic  
Shawn Dawsey  
432.230.8700  
shawn@DownholeDiagnostic.com