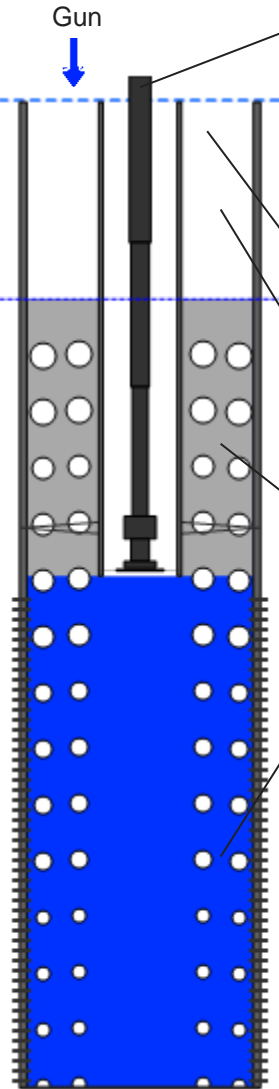
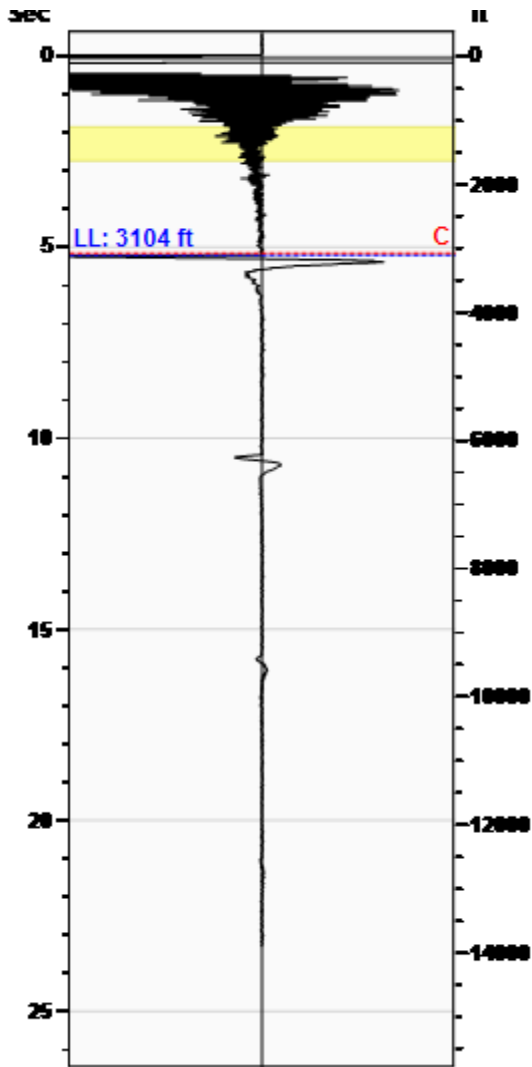


Liquid Level 3104 ft

Fluid Above Pump 4062 ft
Equivalent Gas Free Above Pump 1418 ft



Production			
Date Entered	06/26/15		
	Current	Potential	
Oil	88	**	BBL/D
Water	96	**	BBL/D
Gas	30.0	**	Mscf/D
IPR Method	Vogel		
Producing Efficiency	0.00%		

Casing Pressure	
Pressure	32.4 psi (g)

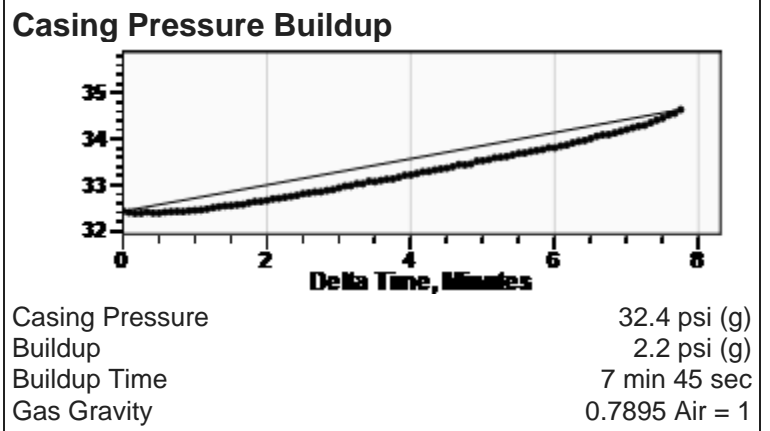
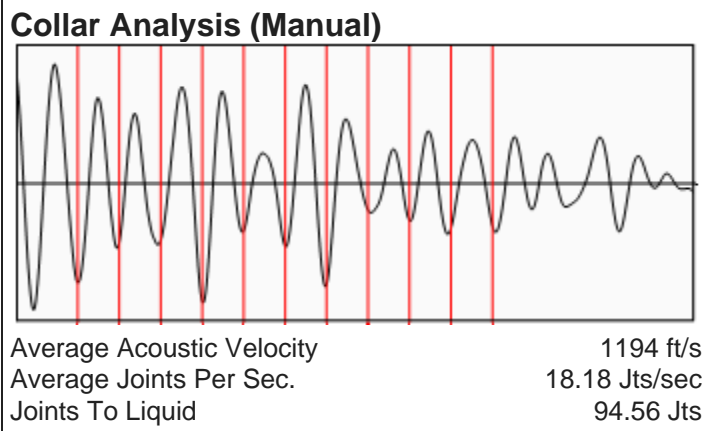
Annular Gas Flow	
Gas Flow	23.3 Mscf/D

Fluid Properties	
% Liquid Above Pump	34.90%
% Liquid Below Pump	58.47%

Wellbore Pressures	
PIP	542.4 psi (g) @ 7339 ft
PBHP	545.3 psi (g) @ 15397 ft
SBHP	**
Gas/Liq Interface	36.6 psi (g) @ 3104 ft

Depths	
Pump Intake Depth	7339 ft
Formation Depth	15397 ft

Sensor Serial No.	
WRF Gun (WRFG 198)	



Comments and Recommendations

Avg 100% RT on POC/VFD. 600# shot.

Downhole Diagnostic
 Shawn Dawsey
 shawn@DownholeDiagnostic.com
 www.DownholeDiagnostic.com

Kissman 1H

C-912D-365-192
100HP/?A Electric 24 hr/day

Stroke 48 of 86

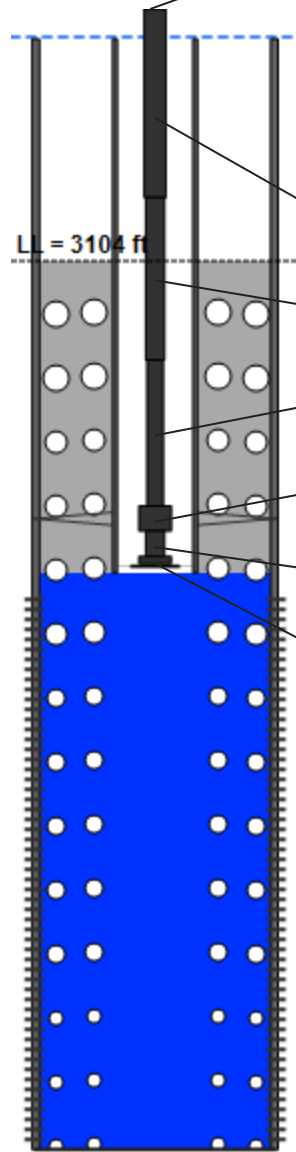
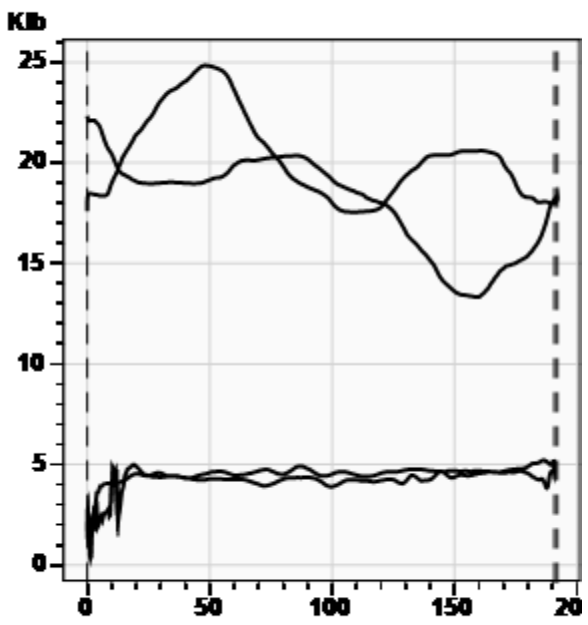
Beam
Loading 68.0%

Stroke
SPM 6.95 spm
Meas. Length 192.00 in

Polished Rod
Peak Load 24835.4 lb
Min Load 13318.2 lb
Power 7.9 HP



Wellhead
Tubing Pressure 370.0 psi (g)
Casing Pressure 32.4 psi (g)



Rod Loading

Diameter (in) / Length (ft)	Grade	Modified Goodman (85%)	Stress (lb)	Sensitivity (85%, H)
1 2225	KD	80.9%	31621.4	74.4%
0.875 2250	KD	64.6%	30532.1	71.8%
0.75 2025	KD	69.3%	29903.8	70.4%
1.5 350	SB	13.0%	5376.8	12.7%
0.875 350	KD	35.2%	11155.4	26.2%
1.5 100	SB	14.8%	3237.5	7.6%

Production

Oil	88 BBL/D
Water	96 BBL/D
Gas	30 BBL/D

System Efficiencies

Polished Rod/Motor Eff.	**
Pump/Motor Eff.	**
Volumetric Eff.	0.0%

Pump (API: 25-150 RHBM 20-4)

Max Stroke Length	190.65 in
Gas Free Plunger Stroke	0.00 in
Gas Free Fillage	0.0%
Gas Free Slippage	0 BBL/D
Gas Free Displacement	0 BBL/D
Calculated Fluid Load Max	5719.6 lb
Pump Fluid Load, Fo(Up-Dn)	4279 lb
Damp Up 0.12339	Damp Dn 0.12339
Kr	212 lb/in
Kt	5936 lb/in
Pump Intake Pressure	815.5 psi (g)
Pump HP	-0.8 HP

Comments and Recommendations
Running on 100% on POC/VFD. Erratic changes from 100% fillage to 0% fillage (SV is sticking open): trash! Pump tag occurs after "missing" a stroke.

Downhole Diagnostic
Shawn Dawsey
shawn@DownholeDiagnostic.com
www.DownholeDiagnostic.com