

University K-4

C-228-246-86
?HP/?A Electric 24 hr/day

Stroke 15 of 139

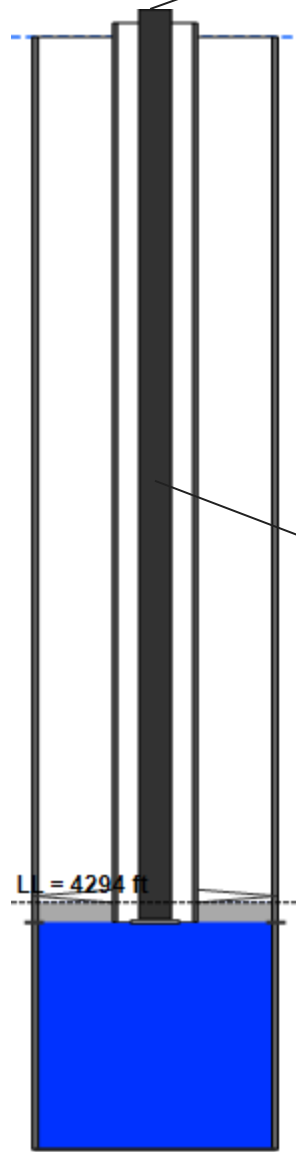
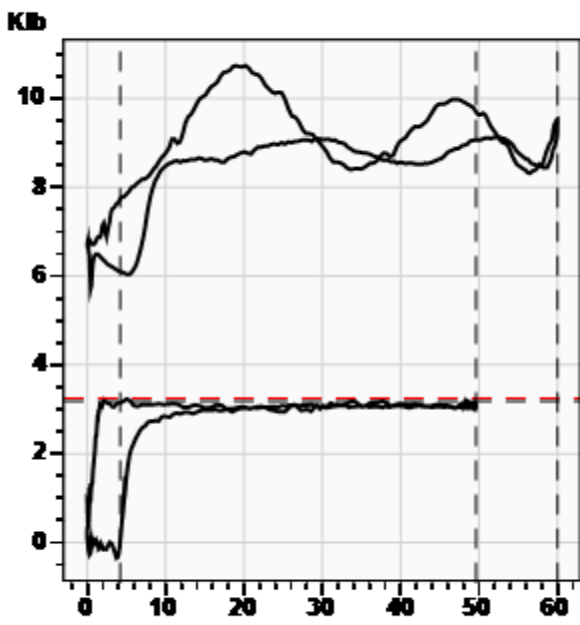
Beam Loading 43.7%

Stroke
SPM 8.09 spm
Meas. Length 60.00 in

Polished Rod
Peak Load 10742.4 lb
Min Load 5712.3 lb
Power 0.8 HP



Wellhead
Tubing Pressure 50.0 psi (g)
Casing Pressure -0.2 psi (g)



Rod Loading

Diameter (in) / Length (ft)	Grade	Modified Goodman (85%)	Stress (lb)	Sensitivity (85%, H)
0.75 / 4375	D	58.0%	24315.8	57.2%

Production

Oil	3 BBL/D
Water	3 BBL/D
Gas	0 BBL/D

System Efficiencies

Polished Rod/Motor Eff.	**
Pump/Motor Eff.	**
Volumetric Eff.	8.5%

Pump (API: 0-150 R?B? 16-4)

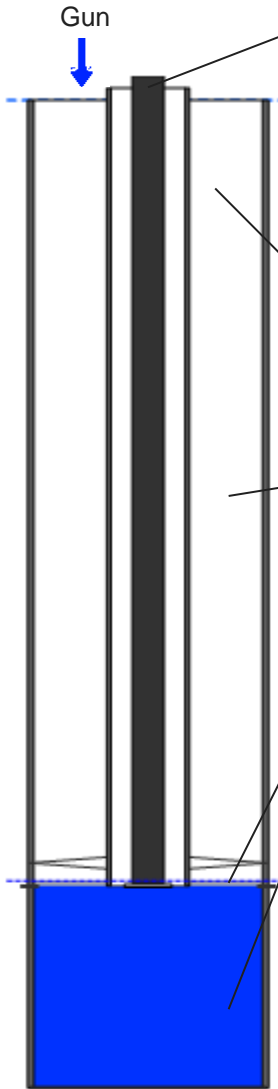
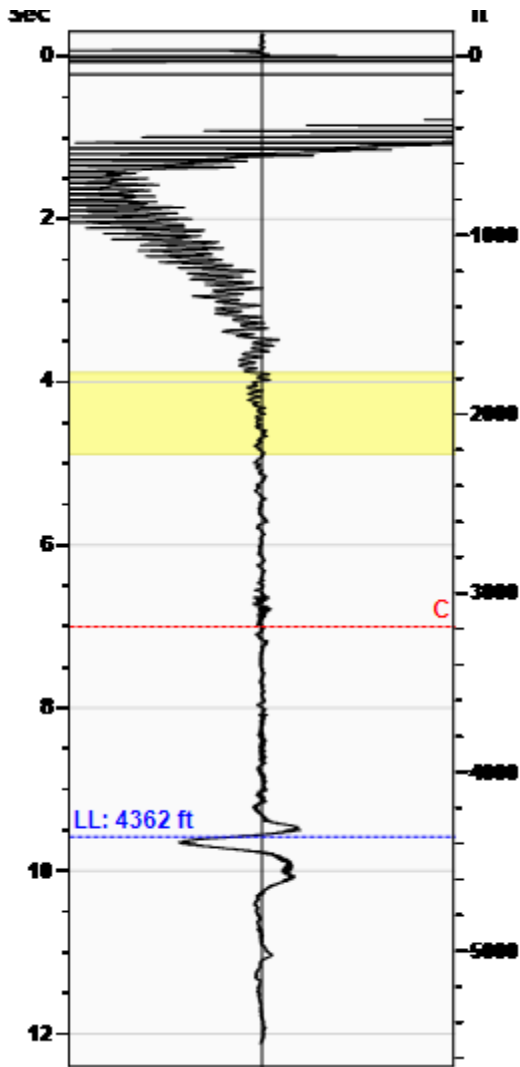
Max Stroke Length	49.61 in
Gas Free Plunger Stroke	4.21 in
Gas Free Fillage	8.5%
Gas Free Slippage	9 BBL/D
Gas Free Displacement	-3 BBL/D
Calculated Fluid Load Max	3247.4 lb
Pump Fluid Load, Fo(Up-Dn)	3070 lb
Damp Up 0.08782	Damp Dn 0.08782
Kr	257 lb/in
Kt	27762 lb/in
Pump Intake Pressure	100.6 psi (g)
Pump HP	0.4 HP

Comments and Recommendations
On 25% avg timer (pins 1-on, 3-off). Well pumped off 10 strokes into the time clock and stayed pumped off with an average 8% effective pump fillage.

Downhole Diagnostic
Shawn Dawsey
shawn@DownholeDiagnostic.com
www.DownholeDiagnostic.com

Liquid Level 4362 ft

Fluid Above Pump 29 ft
Equivalent Gas Free Above Pump 29 ft



Production			
Date Entered	11/12/14		
	Current	Potential	
Oil	3	**	BBL/D
Water	3	**	BBL/D
Gas	0.0	**	Mscf/D
IPR Method	Vogel		
Producing Efficiency	0.00%		

Casing Pressure	
Pressure	-0.2 psi (g)

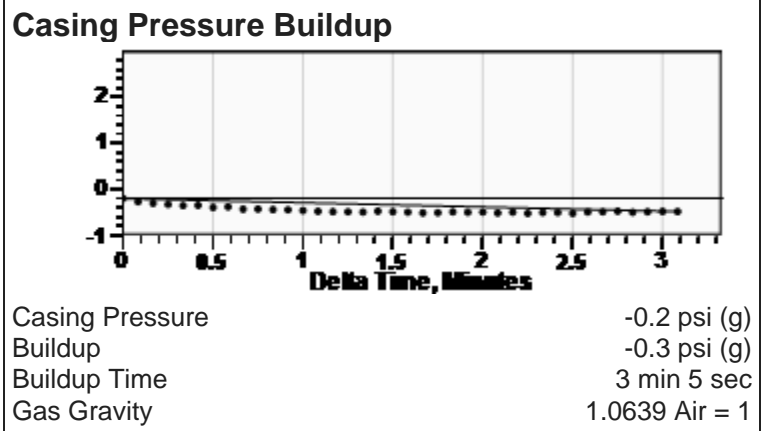
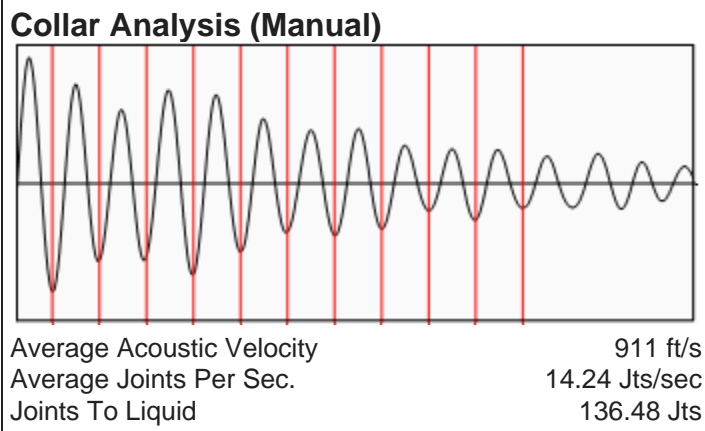
Annular Gas Flow	
Gas Flow	0.0 Mscf/D

Fluid Properties	
% Liquid Above Pump	100.00%
% Liquid Below Pump	100.00%

Wellbore Pressures	
PIP	12.8 psi (g) @ 4391 ft
PBHP	22.9 psi (g) @ 4414 ft
SBHP	**
Gas/Liq Interface	2.3 psi (g) @ 4362 ft

Depths	
Pump Intake Depth	4391 ft
Formation Depth	4414 ft

Sensor Serial No.	
WRF Gun (WRFG 198)	



Comments and Recommendations
Well on 25% RT (pin timer on 1-on, 3-off). Shot taken 10-min into the down-cycle (600# shot). Having a hard time getting Collar-line lower (casing vented).

Downhole Diagnostic
Shawn Dawsey
shawn@DownholeDiagnostic.com
www.DownholeDiagnostic.com