

Windham 42-3

C-228-246-86
25HP/?A Electric 20 hr/day

Stroke 18 of 70

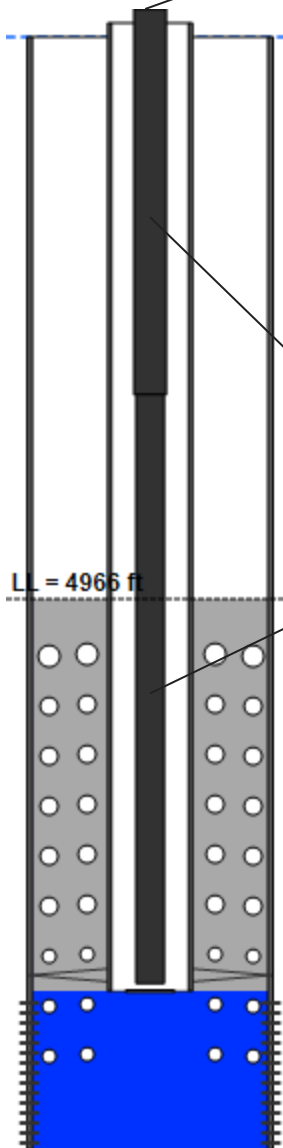
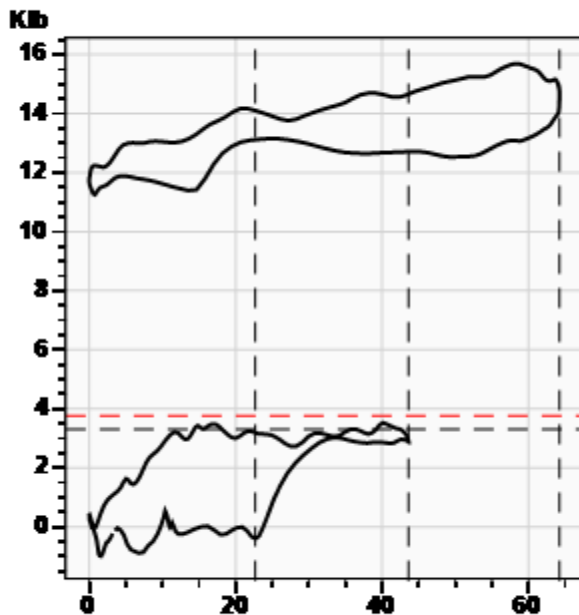
Beam Loading 63.8%

Stroke
SPM 10.34 spm
Meas. Length 64.22 in

Polished Rod
Peak Load 15692.8 lb
Min Load 11253.3 lb
Power 2.7 HP



Wellhead
Tubing Pressure 120.0 psi (g)
Casing Pressure 37.9 psi (g)



Rod Loading

Diameter (in) / Length (ft)	Grade	Modified Goodman (85%)	Stress (lb)	Sensitivity (85%, H)
1 3160	Fiberod	36.0%	20804.5	47.0%
0.875 5200	D	38.1%	23363.2	55.0%

Production

Oil 4 BBL/D
Water 12 BBL/D
Gas 4 BBL/D

System Efficiencies

Polished Rod/Motor Eff. **
Pump/Motor Eff. **
Volumetric Eff. 52.0%

Pump (API: 20-125 RHBC 20-4)

Max Stroke Length 43.62 in
Gas Free Plunger Stroke 22.68 in
Gas Free Fillage 52.0%
Gas Free Slippage 14 BBL/D
Gas Free Displacement 22 BBL/D
Calculated Fluid Load Max 3768.1 lb
Pump Fluid Load, Fo(Up-Dn) 3150 lb
Damp Up 0.12925 Damp Dn 0.12925
Kr 98 lb/in
Kt 16086 lb/in
Pump Intake Pressure 503.9 psi (g)
Pump HP 2.0 HP

Comments and Recommendations

On 50% timer. Well made a stuffing box leak yesterday and is experiencing severe Cycling Gas Interference w/ 35-75% effective Fillage.

Downhole Diagnostic
Shawn Dawsey
shawn@DownholeDiagnostic.com
www.DownholeDiagnostic.com

Liquid Level

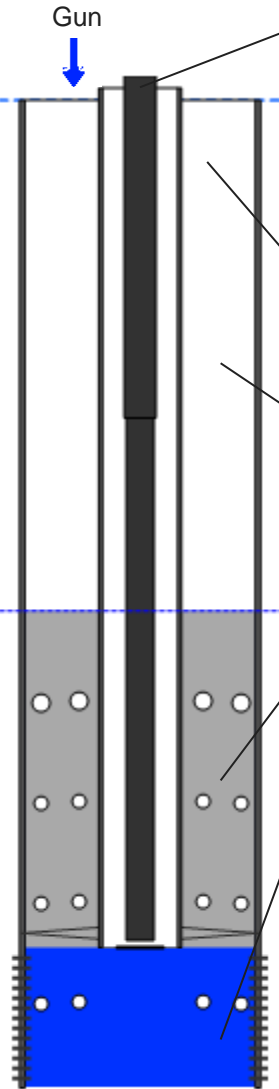
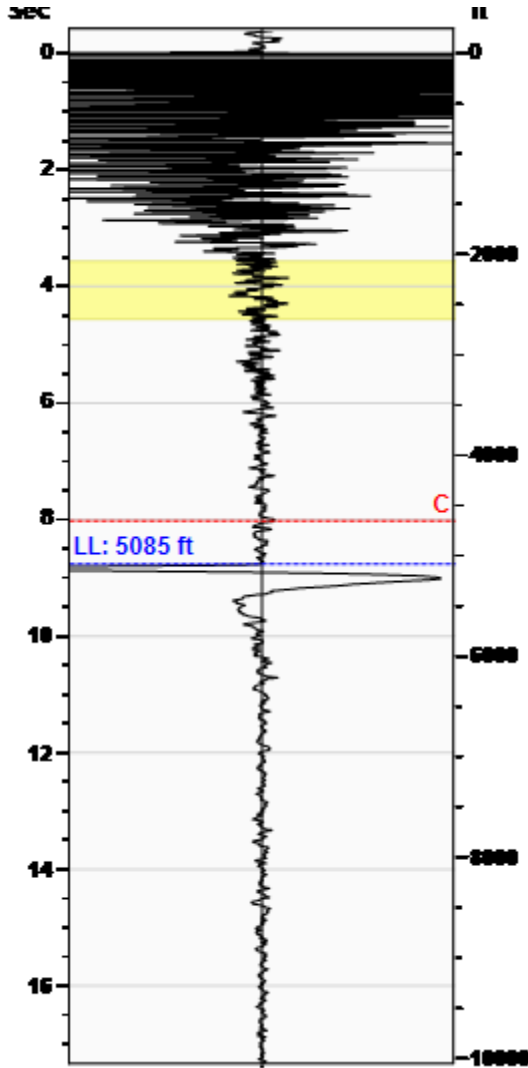
5085 ft

Fluid Above Pump

3345 ft

Equivalent Gas Free Above Pump

2867 ft



Production

Date Entered	01/01/11		
	Current	Potential	
Oil	4	**	BBL/D
Water	12	**	BBL/D
Gas	4.0	**	Mscf/D
IPR Method	Vogel		
Producing Efficiency	0.00%		

Casing Pressure

Pressure	38.3 psi (g)
----------	--------------

Annular Gas Flow

Gas Flow	2.0 Mscf/D
----------	------------

Fluid Properties

% Liquid Above Pump	85.71%
% Liquid Below Pump	90.75%

Wellbore Pressures

PIP	970.4 psi (g) @ 8430 ft
PBHP	1214.6 psi (g) @ 9000 ft
SBHP	**
Gas/Liq Interface	46.4 psi (g) @ 5085 ft

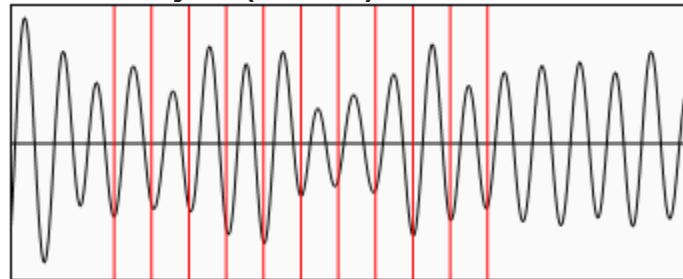
Depths

Pump Intake Depth	8430 ft
Formation Depth	9000 ft

Sensor Serial No.

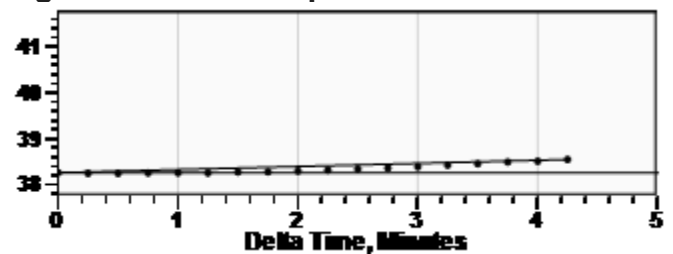
WG 3006

Collar Analysis (Manual)



Average Acoustic Velocity	1160 ft/s
Average Joints Per Sec.	18.55 Jts/sec
Joints To Liquid	162.60 Jts

Casing Pressure Buildup



Casing Pressure	38.3 psi (g)
Buildup	0.3 psi (g)
Buildup Time	4 min 15 sec
Gas Gravity	0.8187 Air = 1

Comments and Recommendations

On 50% timer. 500# shot. Notice: 2867' of GFLAP! This well has a tapped Bull Plug on bottom of the Mud Anchor (defeating the DH Gas Separation design).

Downhole Diagnostic
Shawn Dawsey
shawn@DownholeDiagnostic.com
www.DownholeDiagnostic.com