

Hoefs Trust #1H

C-912-365-168  
100HP/?A Electric 24 hr/day

Stroke 31 of 50

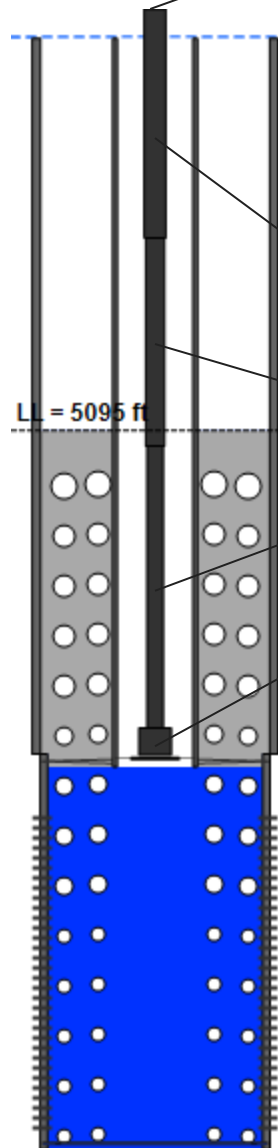
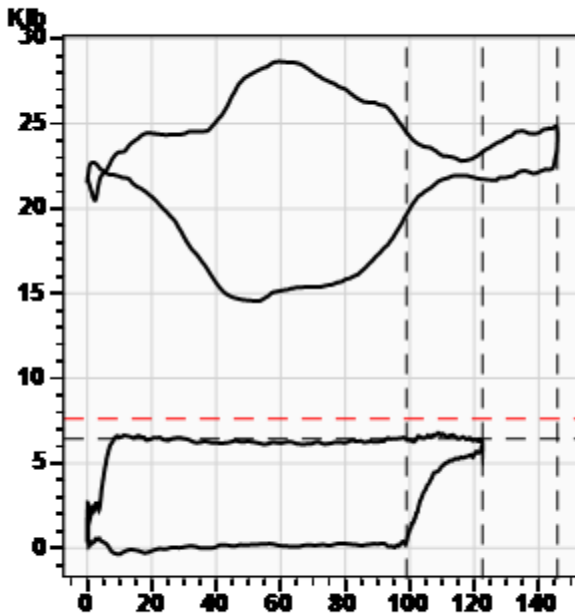
**Beam Loading** 78.5%

**Stroke**  
SPM 6.57 spm  
Meas. Length 145.81 in

**Polished Rod**  
Peak Load 28655.7 lb  
Min Load 14554.0 lb  
Power 15.1 HP



**Wellhead**  
Tubing Pressure 360.0 psi (g)  
Casing Pressure 115.8 psi (g)



**Rod Loading**

Diameter (in) / Length (ft)	Grade	Modified Goodman (85%)	Stress (lb)	Sensitivity (85%, H)
1 2600	H	85.8%	36485.5	85.8%
0.875 2700	H	84.5%	35922.5	84.5%
0.75 3650	H	83.3%	35387.7	83.3%
1.5 350	H	12.4%	5288.6	12.4%

**Production**

Oil 45 BBL/D  
Water 40 BBL/D  
Gas 82 BBL/D

**System Efficiencies**

Polished Rod/Motor Eff. \*\*  
Pump/Motor Eff. \*\*  
Volumetric Eff. 80.7%

**Pump (API: 25-175 RHBC 24-4)**

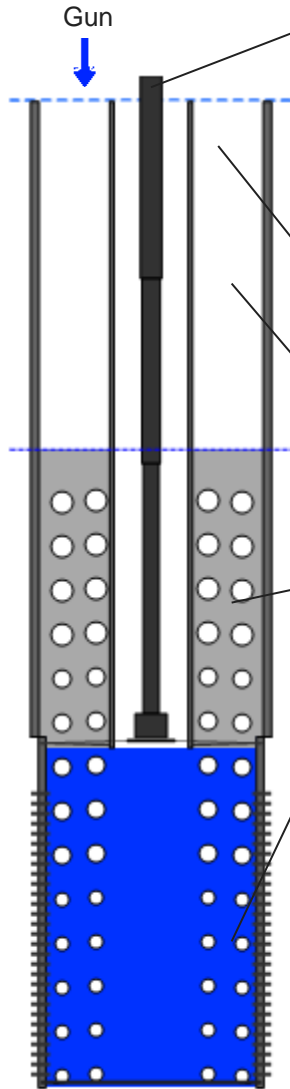
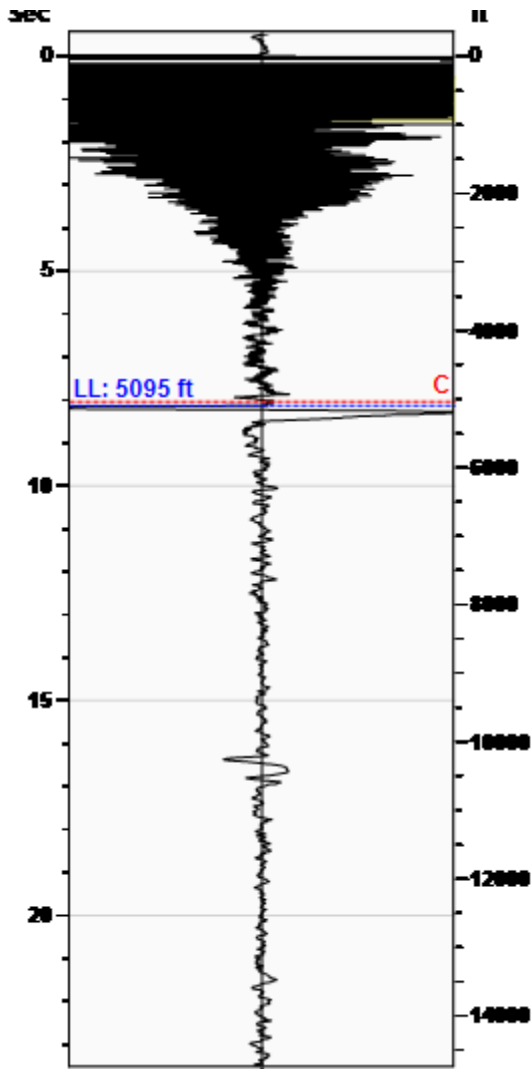
Max Stroke Length 122.59 in  
Gas Free Plunger Stroke 98.98 in  
Gas Free Fillage 80.7%  
Gas Free Slippage 16 BBL/D  
Gas Free Displacement 206 BBL/D  
  
Calculated Fluid Load Max 7608.4 lb  
Pump Fluid Load, Fo(Up-Dn) 6303 lb  
Damp Up 0.14346 Damp Dn 0.14346  
Kr 156 lb/in  
Kt 744944 lb/in  
  
Pump Intake Pressure 542.7 psi (g)  
Pump HP 10.7 HP

**Comments and Recommendations**

Pump fillage ranged between 62-85% due to gas interference. (The well is above the perfs and an insufficiently long Gas Anchor was run: only a 12" strainer)

**Liquid Level** 5095 ft

**Fluid Above Pump** 4250 ft  
**Equivalent Gas Free Above Pump** 1152 ft



Production			
Date Entered	06/24/15		
	Current	Potential	
Oil	45	**	BBL/D
Water	40	**	BBL/D
Gas	82.0	**	Mscf/D
IPR Method	Vogel		
Producing Efficiency	0.00%		

Casing Pressure	
Pressure	115.8 psi (g)

Annular Gas Flow	
Gas Flow	44.9 Mscf/D

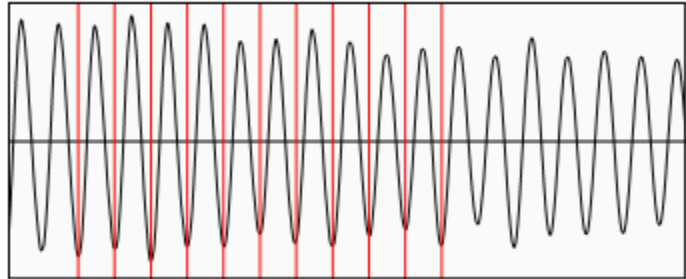
Fluid Properties	
% Liquid Above Pump	27.12%
% Liquid Below Pump	54.74%

Wellbore Pressures	
PIP	489.1 psi (g) @ 9346 ft
PBHP	643.9 psi (g) @ 14236 ft
SBHP	**
Gas/Liq Interface	133.5 psi (g) @ 5095 ft

Depths	
Pump Intake Depth	9346 ft
Formation Depth	14236 ft

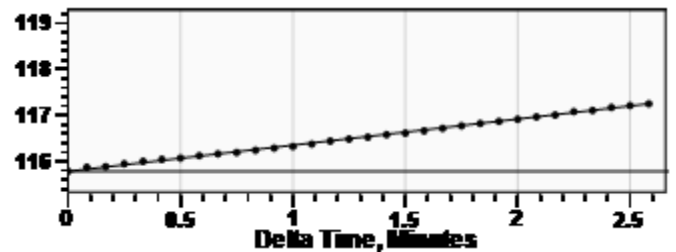
Sensor Serial No.	
WRF Gun (WRFG 198)	

**Collar Analysis (Automatic)**



Average Acoustic Velocity 1253 ft/s  
 Average Joints Per Sec. 18.68 Jts/sec  
 Joints To Liquid 151.82 Jts

**Casing Pressure Buildup**



Casing Pressure 115.8 psi (g)  
 Buildup 1.5 psi (g)  
 Buildup Time 2 min 35 sec  
 Gas Gravity 0.7416 Air = 1

**Comments and Recommendations**

On Djax POC (87% avg RT with 16 DeltaT). Note the high amount of liquids residing above the pump yet the pump is not filling 100%.

Downhole Diagnostic  
 Shawn Dawsey  
 shawn@DownholeDiagnostic.com  
 www.DownholeDiagnostic.com