

Anchorman #1

M228D-256-100
15HP/20A Electric 24 hr/day

Stroke 3 of 4

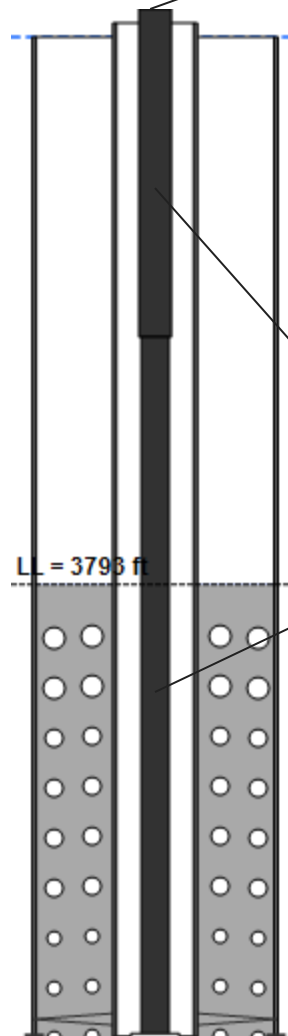
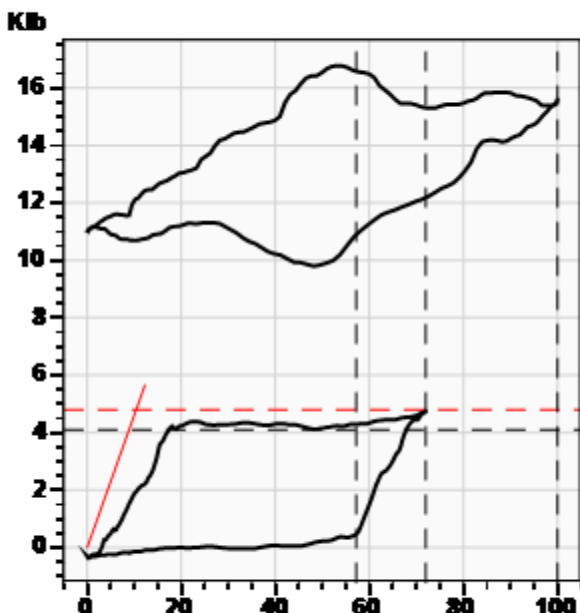
Beam
Loading 65.5%

Stroke
SPM 4.80 spm
Meas. Length 100.00 in

Polished Rod
Peak Load 16778.8 lb
Min Load 9794.3 lb
Power 3.7 HP



Wellhead
Tubing Pressure 150.0 psi (g)
Casing Pressure 69.0 psi (g)



Rod Loading

Diameter (in) / Length (ft)	Grade	Modified Goodman (85%)	Stress (lb)	Sensitivity (85%, H)
0.875 / 2079	D	63.2%	27903.3	65.7%
0.75 / 4858	D	62.1%	26842.5	63.2%

Production

Oil	33 BBL/D
Water	9 BBL/D
Gas	10 BBL/D

System Efficiencies

Polished Rod/Motor Eff.	54.09%
Pump/Motor Eff.	39.19%
Volumetric Eff.	79.5%

Pump (API: 20-150 R??? 0-4)

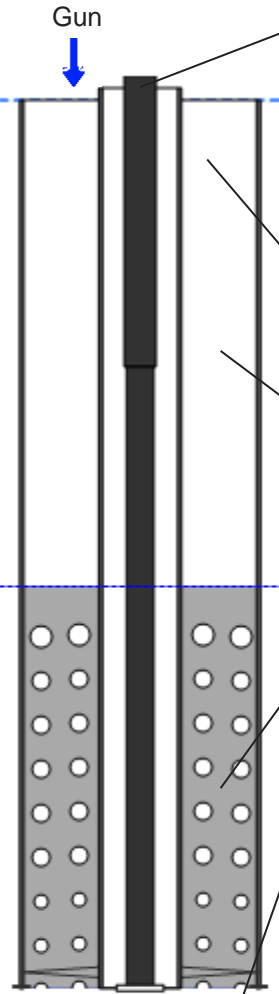
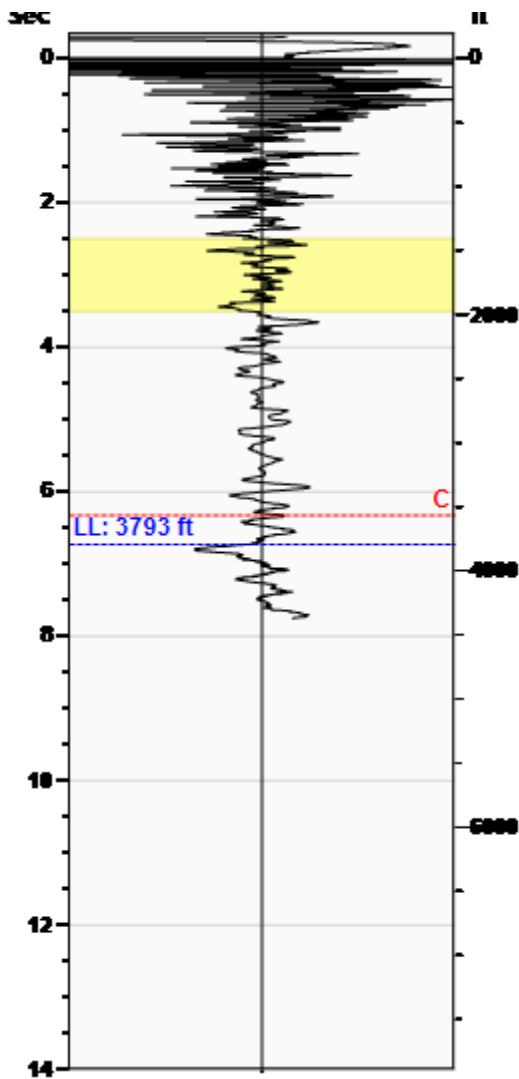
Max Stroke Length	71.99 in
Gas Free Plunger Stroke	57.21 in
Gas Free Fillage	79.5%
Gas Free Slippage	11 BBL/D
Gas Free Displacement	59 BBL/D
Calculated Fluid Load Max	4798.6 lb
Pump Fluid Load, Fo(Up-Dn)	4268 lb
Damp Up 0.20000	Damp Dn 0.20000
Kr	176 lb/in
Kt	19498 lb/in
Pump Intake Pressure	300.3 psi (g)
Pump HP	2.7 HP

Comments and Recommendations
Running 100% on POC/VFD. Well was pulled 1-month ago for Tubing Leak and it appears the TAC was not properly set: card slanted to Tubing Spring Constant.

Downhole Diagnostic
Shawn Dawsey
shawn@DownholeDiagnostic.com
www.DownholeDiagnostic.com

Liquid Level **3793 ft**

Fluid Above Pump **3136 ft**
Equivalent Gas Free Above Pump **945 ft**



Production

Date Entered 04/15/95

	Current	Potential	
Oil	33	34	BBL/D
Water	9	9	BBL/D
Gas	9.6	10.1	Mscf/D

IPR Method Vogel
 Producing Efficiency 95.88%

Casing Pressure

Pressure 69.0 psi (g)

Annular Gas Flow

Gas Flow 26.3 Mscf/D

Fluid Properties

% Liquid Above Pump	30.13%
% Liquid Below Pump	53.69%

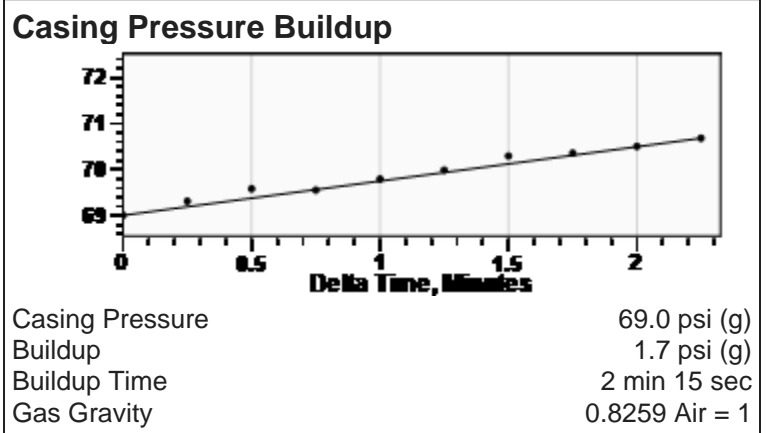
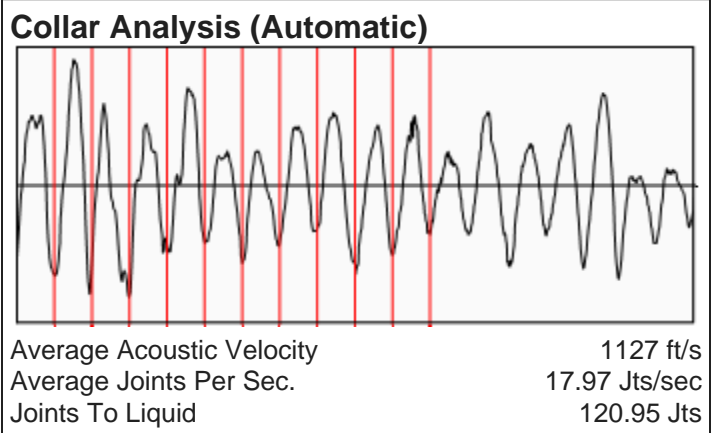
Wellbore Pressures

PIP	392.6 psi (g) @ 6929 ft
PBHP	393.3 psi (g) @ 6932 ft
SBHP	3030.3 psi (g) @ 6932 ft
Gas/Liq Interface	79.0 psi (g) @ 3793 ft

Depths

Pump Intake Depth	6929 ft
Formation Depth	6932 ft

Sensor Serial No.
CG



Comments and Recommendations

Running on 100% POC/VFD. 600# shot.

Downhole Diagnostic
 Shawn Dawsey
 shawn@DownholeDiagnostic.com
 www.DownholeDiagnostic.com